



ALUMIFONT

CATÁLOGO 2023

PARA QUEM SABE  
QUE OS DETALHES QUE  
FAZEM A DIFERENÇA.



ALUMIFONT



# ÍNDICE

Linha tabelada	0
Linha de contramarcos, conexões e arremates	4
Linha moveleira	8
Linha de divisórias	16
Linha cortinas suíças	19
Módulos práticos	22
Linha 16	29
Linha 25	32
Linha venezianas	38
Linha portões	42
Linha corrimão e gradil	55
Box frisado antigo	59
Box frisado novo	62
Linha box de vidro temperado	65
Linha box de vidro temperado 8mm	68
Linha box de vidro temperado 10mm	73
Kit Pia	76
Linha Maxim-ar	78
Linha suprema	82
Linha sacadas	84
Linha pele de vidro	97
Perfs para energia solar	101
Sumário	104

# HÁ MAIS DE 10 ANOS SERVINDO O MELHOR.

Fundada em 2011, a Alumifont é uma empresa com sede própria, estabelecida em João Pessoa, Paraíba. Possui como valores principais a ética profissional e o respeito aos seus clientes, colaboradores, como também a todo o mercado brasileiro e internacional.

Em meados de 2009-2010, notou-se que o mercado brasileiro relativo à construção civil aumentava de forma brusca e em consequência disso havia a necessidade de atender esta demanda de forma rápida e eficiente com o fornecimento de mais perfis em alumínio. Foi então que nasceu a ideia de criar uma empresa que, com todos os valores já elencados, atendesse ao mercado e suas exigências, estas a cada dia mais intensas.

Contamos com algumas fábricas parceiras estabelecidas no continente asiático. Algumas delas com mais de 50 prensas de extrusão por planta fabril, com capacidade mensal de produção de mais de 12.000 toneladas em perfis extrudados de alumínio por fábrica.

Em função da exigência da própria Aluminfont, tais fábricas usam 100% de lingote de alumínio virgem, com 99,9% de pureza para fabricação de tarugos para extrusão de seus perfis de alumínio, atrelados à utilização de equipamentos de última geração, essa combinação perfeita proporciona aos nossos perfis de alumínio um acabamento de máxima perfeição, trazendo conseqüentemente a satisfação de todos os que estão envolvidos na cadeia de consumo de nosso mercado.

# ACABAMENTOS

Todos os produtos do catálogo e peças personalizadas são feitas com o que temos de melhor. Você pode escolher o acabamento que melhor servir ao seu projeto.



## PINTURA ELETROESTÁTICA

Alta tecnologia e resistência, nas mais diversas cores, a pintura pode ser feita com acabamento fosco ou brilhante. Você escolhe.



## ANODIZADO

Além da estética impecável, protege a peça da corrosão e demais ataques do ambiente, como salina e fumaça industrial.



## EFEITO MADEIRA

Com diversas cores e estilos, você tem toda a beleza da madeira com a resistência que só o alumínio oferece.

# **CONHEÇA NOSSOS PRODUTOS**

**CATÁLOGO 2023**



CONHEÇA NOSSOS PRODUTOS

# LINHA TABELADOS

ALUMIFONT

### Barras Chats



Código	Peso (kg/m)	A (mm)	B (mm)
BC 1/20x3	0,309	21,7	3,075
BC 1/20x5	0,344	19,05	3,075
BC 1/21x3	0,339	21,4	3,075

### Tubo Redondo



Código	Peso (kg/m)	OD (mm)	ID (mm)	t (mm)
TR 1/2"	0,807	21,3	17,8	1,75
TR 1/2"	0,807	21,3	17,8	1,75
TR 3/8"	0,403	16,5	13,0	1,75
TR 3/8"	0,403	16,5	13,0	1,75
TR 1/2"	0,807	21,3	17,8	1,75
TR 1/2"	0,807	21,3	17,8	1,75
TR 3/8"	0,403	16,5	13,0	1,75
TR 3/8"	0,403	16,5	13,0	1,75
TR 1/2"	0,807	21,3	17,8	1,75
TR 1/2"	0,807	21,3	17,8	1,75
TR 3/8"	0,403	16,5	13,0	1,75
TR 3/8"	0,403	16,5	13,0	1,75

### Tubo Quadrado



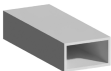
Código	Peso (kg/m)	A (mm)	t (mm)
TR 1/2"	0,801	21,3	1,75
TR 3/4"	0,931	19,0	1,75
TR 1/2"	0,801	21,3	1,75
TR 3/4"	0,931	19,0	1,75
TR 1/2"	0,801	21,3	1,75
TR 3/4"	0,931	19,0	1,75
TR 1/2"	0,801	21,3	1,75
TR 3/4"	0,931	19,0	1,75



Conheça nossos produtos

## Linha Tabelados

### Tubo Retangular



Código	Peso (kg/m)	A (mm)	B (mm)	e (mm)
TR 143/9	0,168	20,8	4,75	1,80
TR 143/2	0,177	20,4	12,7	0,90
TR 143/9	0,181	16,8	11,7	1,80
TR 143/6B	0,191	16,8	21,4	0,90
TR 143/1,0	0,198	16,8	21,4	0,90
TR 143/1,2	0,409	16,8	19,1	0,90
TR 143/1,4	0,444	16,1	16,1	1,40
TR 143	0,464	20,1	16,1	1,40



### Perfl T



Código	Peso (kg/m)	A (mm)	B (mm)
PT 008	0,125	21,400	1,80



### Perfl U



Código	Peso (kg/m)	A (mm)	B (mm)	e (mm)
PU 020	0,128	21,60	12,60	1,31
PU 070	0,175	25,30	25,30	1,05
PU 070	0,180	18,30	25,30	1,30



Conheça nossos produtos

## Linha Tabelados



Sólido Quadrado



Código	Peso	A	B
	(kg/m)	(mm)	(mm)
TRQ 14	6,189	6,35	6,35



Sólido Redondo



Código	Peso	ØA
	(kg/m)	(mm)
TRR 5/16	0,088	4,70
TRR 14	0,086	6,35



Canalado



Código	Peso	A	B
	(kg/m)	(mm)	(mm)
1.120	0,866	25,70	1,00
1.128	0,875	25,80	0,80
1.134	0,881	25,80	0,80
1.133,2	0,935	25,40	1,00
1.121,20	0,224	25,40	1,00
1.121,8	0,410	25,40	1,00
1.1.1.070/15	0,524	28,20	1,00
1.1.1.070/20	0,633	28,20	1,00
1.121,20	0,424	28,20	1,00
1.1.1.170	0,651	28,20	1,00



Conheça nossos produtos

**Linha Tabelados**



CONHEÇA NOSSOS PRODUTOS

**LINHA DE CONTRAMARCOS,  
CONEXÕES E ARREMATES**

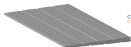
ALUMIFONT



**CM 200**  
L.127 Agre



**CL 000**  
L.100 Agre



**CL 011**  
L.020 Agre



Conheça nossos produtos  
Linha de contramarcos,  
conexões e arremates



**BX 707**  
1,100 kg/m



**BX 715**  
0,370 kg/m



**BX 810**  
0,470 kg/m



Conheça nossos produtos  
Linha de contramarcos,  
conexões e arremates



**BX 811**  
0,208 kg/m



**BX 856**  
0,228 kg/m



**BX 1038**  
0,198 kg/m



Conheça nossos produtos  
Linha de contramarcos,  
conexões e arremates



CONHEÇA NOSSOS PRODUTOS

# LINHA MOVELEIRA

ALUMIFONT



**AF 051**  
Ø 20x240 mm



**AF 053**  
Ø 20x114 mm



**AF 055**  
Ø 20x114 mm



**AF 056**  
Ø 20x114 mm



Conheça nossos produtos

**Linha Moveleira**



**AP 887**  
8,88x40x4



**AP 888**  
8,88x40x4



**AP 889**  
8,88x40x4



**AP 881 180**  
8,88x40x4



Conheça nossos produtos

**Linha Moveleira**



**AF 001 15**  
0,25 kg/m



**AF 001 10**  
0,40 kg/m



**AF 000**  
0,09 kg/m



**DX 270**  
0,70 kg/m



Conheça nossos produtos

**Linha Moveleira**



**DV 021**  
0,509 kg/m



**DV 021 A (BX 0855)**  
0,700 kg/m



**DV 022**  
0,333 kg/m



**DV 100**  
0,241 kg/m



Conheça nossos produtos

**Linha Moveleira**





**BXC 019**  
0,749 kg/m



**BXC 020**  
0,749 kg/m



**BXC 022**  
0,671 kg/m



**BXC 026**  
0,671 kg/m



Conheça nossos produtos

**Linha Moveleira**





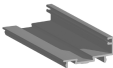
CONHEÇA NOSSOS PRODUTOS

# LINHA DE DIVISÓRIAS

ALUMIFONT



**BG 011**  
0,085 kg/m



**DV 110**  
0,288 kg/m

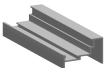


Conheça nossos produtos

**Linha de Divisórias**



DW 111  
0,188 kg/m



DW 112  
0,234 kg/m



DW 132  
0,241 kg/m



Conheça nossos produtos

**Linha de Divisórias**



CONHEÇA NOSSOS PRODUTOS

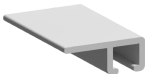
# LINHA CORTINAS SUÍÇAS

ALUMIFONT



**BX 796**

0,238 kg/m



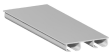
**BX 797**

0,088 kg/m



Conheça nossos produtos

**Linha Cortinas Suíças**



**BX 798**  
520 g/m



**BX 799**  
6185 g/m



**BX 908**  
6497 g/m



Conheça nossos produtos

**Linha Cortinas Suiças**



CONHEÇA NOSSOS PRODUTOS

# MÓDULOS PRÁTICOS

ALUMIFONT



**BG 202**  
0,069 kg/m



**MP 009**  
0,280 kg/m



**MP 020**  
0,280 kg/m



Conheça nossos produtos

**Linha Módulos Práticos**

**MP 300**  
0,207 kg/m



**MP 302**  
0,266 kg/m



**MP 303**  
0,264 kg/m



Conheça nossos produtos

**Linha Módulos Práticos**



**MP 321**  
0,384 kg/m



**MP 332**  
0,444 kg/m



**MP 336**  
0,400 kg/m



Conheça nossos produtos

**Linha Módulos Práticos**

**MP 352**  
0,159 kg/m



**MP 354**  
0,766 kg/m



**MP 357**  
0,608 kg/m

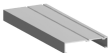


Conheça nossos produtos

**Linha Módulos Práticos**



**MP 100**  
0,485 kg/m



**MP 150**  
0,485 kg/m



**MP 300**  
0,470 kg/m

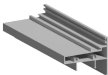


**MP 500**  
0,485 kg/m



Conheça nossos produtos

**Linha Módulos Práticos**



**MP 362**  
0,488 kg/m



**MP 363**  
0,488 kg/m



**MP 378**  
0,488 kg/m



Conheça nossos produtos

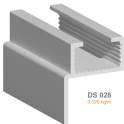
**Linha Módulos Práticos**



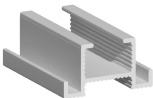
CONHEÇA NOSSOS PRODUTOS

**LINHA 16**

ALUMIFONT



**DS 026**  
0,125 kg/m



**DS 031**  
0,155 kg/m



Conheça nossos produtos

**Linha 16**



**DS 038**  
0,272 kg/m



**DS 039**  
0,479 kg/m



**DS 042**  
0,145 kg/m



Conheça nossos produtos

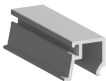
**Linha 16**



CONHEÇA NOSSOS PRODUTOS

**LINHA 25**

ALUMIFONT



**BG 001**  
0,102 kg/m



**BG 035**  
0,168 kg/m



**ME 56**  
0,168 kg/m



Conheça nossos produtos

**Linha 25**



**25001**  
0,267 kg/m



**25002**  
0,202 kg/m



**25016**  
0,222 kg/m

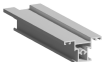


Conheça nossos produtos

**Linha 25**



**25026**  
0,478 kg/m



**25048**  
0,430 kg/m



**25052**  
0,329 kg/m



Conheça nossos produtos

**Linha 25**



**25301**  
0,202 kg/m



**25311**  
0,287 kg/m



**25312**  
0,274 kg/m



Conheça nossos produtos

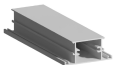
**Linha 25**



**25004**  
4.300 kg/m



25008



**25508**  
6.571 kg/m



**25514**  
6.403 kg/m



Conheça nossos produtos

**Linha 25**



CONHEÇA NOSSOS PRODUTOS

# LINHA VENEZIANA

ALUMIFONT



**MT 0071**  
6,67 mm



**VE 004 (MT 0071)**  
6,67 mm

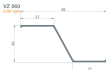


**RAM17-025**  
6,67 mm



Conheça nossos produtos

**Linha Veneziana**



VZ 201  
Alu-Profile



Conheça nossos produtos

**Linha Veneziana**



BOX 808  
6,208 kg/m



BOX 1189  
5,894 kg/m



Conheça nossos produtos

**Linha Veneziana**



CONHEÇA NOSSOS PRODUTOS

# LINHA PORTÕES

ALUMIFONT



**3D 044**  
0,226 kg/m



**AF 188 U**  
0,668 kg/m

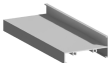
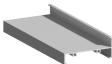


**BX 637**  
0,408 kg/m



Conheça nossos produtos

**Linha Portões**



Conheça nossos produtos

**Linha Portões**



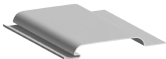
Conheça nossos produtos

**Linha Portões**

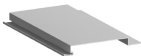




LD 001  
1000 mm



LD 007  
1000 mm

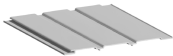


LD 010  
1000 mm



Conheça nossos produtos

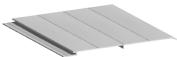
**Linha Portões**



LB 010  
125x4 esp



LB 013  
125x4 esp

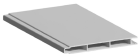


LB 020  
125x4 esp

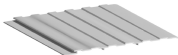


Conheça nossos produtos

**Linha Portões**



LB 007  
1000 Agn



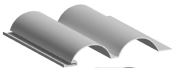
LB 008  
1000 Agn



LB 070  
1000 Agn



Conheça nossos produtos  
**Linha Portões**



LB 001  
1000 mm



LB 002  
1000 mm



LB 003  
1000 mm

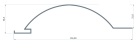


Conheça nossos produtos

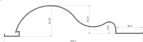
**Linha Portões**



**E 77**  
0,550 kg/m



**604 184**  
0,640 kg/m



**604 214**  
0,670 kg/m



Conheça nossos produtos  
**Linha Portões**



**EX 841**  
841mm x 40mm



**EX 842**  
842mm x 40mm



**EX 1041**  
1041mm x 40mm



TGR 4x2

0,230 kg/m



TGR 2x1

0,120 kg/m



Conheça nossos produtos

Linha Portões



**TOR 321 1/2**  
Linha Design



**TOR 412-124 140**  
Linha Design



Conheça nossos produtos

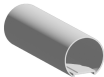
**Linha Portões**



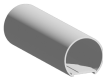
CONHEÇA NOSSOS PRODUTOS

# LINHA CORRIMÃO E GRADIL

ALUMIFONT



**MT 808L**  
Ø 80,8 mm



**MT 808R**  
Ø 80,8 mm



**MT 8010**  
Ø 80,8 mm



**GG 810**  
Ø 80,8 mm



Conheça nossos produtos

**Linha Corrimão e Gradil**



MT 8040  
Linha Gradil



MT 8047  
Linha Gradil



MT 8048  
Linha Gradil



MT 8049 (CG 878)  
Linha Gradil



Conheça nossos produtos

Linha Corrimão e Gradil



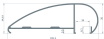
MT 0660 (CG 2530)  
Corrimão



EX 700  
Corrimão



GR 001  
Corrimão



GR 002  
Corrimão



Conheça nossos produtos

Linha Corrimão e Gradil



CONHEÇA NOSSOS PRODUTOS

# **BOX FRISADO ANTIGO**

ALUMIFONT



**BX 060**

0,176 kg/m



**BX 061**

0,160 kg/m



Conheça nossos produtos

**Linha Box Frisado A.**

**BX 062**  
0,200 kg/m



**BX 063**  
0,208 kg/m



**BX 101**  
0,400 kg/m



Conheça nossos produtos

**Linha Box Frisado A.**



CONHEÇA NOSSOS PRODUTOS

# **BOX FRISADO NOVO**

ALUMIFONT



**BX 116**  
0,248 kg/m



**BX 156**  
0,300 kg/m



Conheça nossos produtos

**Linha Box Frisado N.**



**BX 157**  
0,187 kg/m



**BX 158**  
0,187 kg/m



**BX 159**  
0,190 kg/m



Conheça nossos produtos

**Linha Box Frisado N.**



CONHEÇA NOSSOS PRODUTOS

# **LINHA BOX VIDRO TEMPERADO**

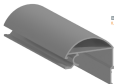
ALUMIFONT



**BX 092**  
0,100 kg/m



**BX 189**  
0,170 kg/m



**BX 201**  
0,470 kg/m



Conheça nossos produtos

**Linha Box de Vidro Temperado**



**MT 0066**

6,117 kg/m



**MT 0067**

6,118 kg/m



**MT 0089**

6,079 kg/m



Conheça nossos produtos

**Linha Box de Vidro Temperado**



CONHEÇA NOSSOS PRODUTOS

# **LINHA BOX VIDRO TEMPERADO 8MM**

ALUMIFONT



AL 001  
8,200 kg/m



AL 002  
8,730 kg/m



AL 003  
8,200 kg/m



Conheça nossos produtos

Linha Box de Vidro Temperado 8mm



**MT 0080**

0,321 kg/m



**MT 0088**

0,200 kg/m



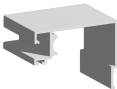
**MT 0089**

0,079 kg/m



Conheça nossos produtos

Linha Box de Vidro Temperado 8mm 70



**MT 8090**  
0.884 kg/m



**BT 807**  
0.152 kg/m



Conheça nossos produtos

Linha Box de Vidro Temperado 8mm 71



**BX 128**  
0,168 kg/m



**BX 626**  
0,137 kg/m



Conheça nossos produtos

Linha Box de Vidro Temperado 8mm



CONHEÇA NOSSOS PRODUTOS

**LINHA BOX VIDRO  
TEMPERADO 10MM**

ALUMIFONT



**MT 0079**  
1,48kg/m



**MT 0080**  
1,48kg/m



**MT 0082**  
1,78kg/m



MT 0082A



**MT 0084**  
1,24kg/m



Conheça nossos produtos  
**Linha Box de Vidro**  
**Temperado 10mm**



**MT 0095**  
6,027 kg/m



**BX 004**  
0,228 kg/m



**BX 130**  
4,40 kg/m



**BX 238**  
5,56 kg/m



Conheça nossos produtos  
**Linha Box de Vidro  
Temperado 10mm**



CONHEÇA NOSSOS PRODUTOS

# KIT PIA

ALUMIFONT

KP 062  
0,124 kg/m



KP 063  
0,300 kg/m



KP 064  
0,307 kg/m





CONHEÇA NOSSOS PRODUTOS

# LINHA MAXIM-AR

ALUMIFONT



DS 004  
0,334 kg/m

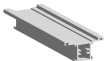


SU 079  
4,100 kg/m



Conheça nossos produtos

**Linha Maxim-Ar**



SU 090  
6,079 kg/m



SU 090  
6,481 kg/m



SU 091  
6,424 kg/m



Conheça nossos produtos

Linha Maxim-Ar



**SU 183**  
6,14 kg/m



**SU 270**  
6,77 kg/m



**SU 302**  
6,208 kg/m



**SU 779**  
6,288 kg/m



Conheça nossos produtos

**Linha Maxim-Ar**



CONHEÇA NOSSOS PRODUTOS

# LINHA SUPREMA

ALUMIFONT





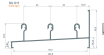
501 007  
Linha Suprema



501 010  
Linha Suprema

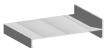


501 011  
Linha Suprema



Conheça nossos produtos

**Linha Suprema**



60/100  
100/100



60/100  
100/100



60/100  
100/100



Conheça nossos produtos

Linha Suprema



Conheça nossos produtos

**Linha Suprema**





FIG 260  
Linha Suprema



FIG 262  
Linha Suprema



FIG 263  
Linha Suprema



Conheça nossos produtos

**Linha Suprema**

**FU 364**  
6.000 g/m



**FU 399**  
6.527 g/m



**FU 360**  
6.400 g/m



Conheça nossos produtos

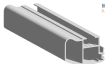
**Linha Suprema**



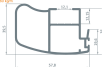
**PU 501**  
0,508 kg/m



**MT 0113**  
0,542 kg/m



**MT 0117**  
0,760 kg/m



Conheça nossos produtos

**Linha Suprema**



**BK 821**  
2.472 kg/m



**BK 823**  
3.593 kg/m



**BK 824**  
2.471 kg/m



Conheça nossos produtos

**Linha Suprema**



**BX 820**  
C/160 mm



**BX 820**  
C/160 mm



Conheça nossos produtos

**Linha Suprema**



80C 80T  
80x80 mm



80C 100T  
80x100 mm



Conheça nossos produtos

**Linha Suprema**



CONHEÇA NOSSOS PRODUTOS

# LINHA SACADAS

ALUMIFONT



**EX 605**  
3,192 kg/m



**EX 606**  
3,448 kg/m



**EX 610**  
3,430 kg/m





CONHEÇA NOSSOS PRODUTOS

# PELE DE VIDRO

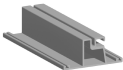
ALUMIFONT



BB 708  
1,04 mm



BB 710  
1,04 mm



BB 712  
1,04 mm



Conheça nossos produtos

**Pele de Vidro**



**BX 719L**  
0,714 kg/m



**BX 717A**  
0,880 kg/m



**BX 1006 (PC-281)**  
0,408 kg/m



Conheça nossos produtos

**Pele de Vidro**





CONHEÇA NOSSOS PRODUTOS

# PERFIS PARA ENERGIA SOLAR

ALUMIFONT



**BA 1090**  
4.474 kg/m



**BA 1087**  
4.073 kg/m



Conheça nossos produtos

**Perfis para Energia Solar** 102



**BK 1103**  
0,807 kg/m



**MT 0077**  
0,192 kg/m



**U 15**  
0,172 kg/m



Conheça nossos produtos

**Perfis para Energia Solar** 103
















CONHEÇA NOSSOS PRODUTOS

# SUMÁRIO









ALUMIFONT

Código	Kg/m	Pág
<b>Barra chata</b>		
 BC 102x1/8	0,109	09
 BC 142x1/8	0,164	09
 BC 12x1/8	0,219	09

#### Tubos redondos








 TR 3/8	0,059	09
 TR 1/2	0,100	09
 TR 50x0,8	0,100	09
 TR 50x0,9	0,116	09
 TR 3/4	0,153	09
 TR 7/8	0,183	09
 TR 100,8	0,188	09
 TR 101,0	0,208	09
 TR 1,194	0,263	09
 TR 1,62	0,317	09
 TR 3/4	0,425	09
 TR 2	0,528	09
 TR 3	0,813	09

#### Tubos quadrados

 TQ 5/8	0,161	09
 TQ 3/4	0,215	09
 TQ 102,8	0,214	09
 TQ 101,0	0,264	09
 TQ 1,12	0,404	09
 TQ 2	0,595	09
 TQ 3	0,899	09
 TQ 4	1,424	09

#### Tubos retangulares

 TG 12x1/4	0,162	09
--	-------	----

Código	Kg/m	Pág
 TG 18x1/2	0,177	09
 TG 28x1/2	0,317	09
 TG 30x0,8	0,325	09
 TG 30x1,0	0,363	09
 TG 30x1,12	0,428	09
 TG 30x1,12	0,611	09
 TG 4x2	0,816	09











#### Perfil T

 PT 308	0,135	10
--	-------	----

#### Perfil U

 AF 552U	0,129	10
 PU 626L	0,279	10
 PU 639	0,344	10

#### Cantoneira abas iguais

 L 52	0,066	10
 L 68	0,075	10
 L 54	0,081	10
 L 101,0	0,105	10
 L 121,16	0,214	10
 L 101,8	0,412	10
 L 1,102x116	0,324	10
 L 1,102x118	0,601	10
 L 2X116	0,434	10
 L 2X118	0,801	10

#### Sólidos redondos



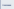






 TRS 3/16	0,049	10
 TRS 1/4	0,065	10

#### Sólido quadrado

















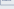
 TQS 1/4	0,109	11
---	-------	----












Código	Kg/m	Pág
--------	------	-----

#### Contramuro, conexões e arremates

 CM 250	0,137	12
 CL 006	1,118	12
 CL 011	0,269	12
 BX 707	1,155	12
 BX 715	0,230	12
 BX 810	0,470	12
 BX 811	0,269	12
 BX 858	0,224	12
 BX 1090	0,189	14

#### Movleira

 AF 051	0,200	15
 AF 053	0,303	15
 AF 055	0,263	15
 AF 056	0,267	15
 AF 057	0,289	16
 AF 059	0,441	16
 AF 060	0,459	16
 AF 061-15E	0,202	16
 AF 061-15	0,370	17
 AF 061-15	0,482	17
 AF 068	0,510	17
 BX 275	0,721	17
 DV 021	0,329	18
 DV 021A	0,315	18
 DV 022	0,322	18
 DV 165	0,247	18
 DV 300	0,794	19

Código	Kg/m	Flaq
 BX 828	0,423	19
 BX 705	0,291	19
 BX 818	0,283	19
 BX 819	0,218	20
 BX 820	0,743	20
 BX 822	0,374	20
 BX 838	0,288	20
 BX 855	0,343	21
 BX 952	0,227	21
 BX 954	0,488	21
 BX 955	0,179	21

#### Divisória







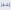


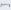



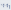
 DV 011	0,085	22
 DV 110	0,285	22
 DV 111	0,189	22
 DV 112	0,234	22
 DV 132	0,247	22

#### Cortina Suíça

 BX 796	0,235	23
 BX 797	0,088	23
 BX 798	0,235	23
 BX 799	0,183	23
 BX 958	0,479	23

#### Módulo Prático









 MP 693	0,089	24
 MP 699	0,580	24
 MP 670	0,469	24
 MP 390	0,287	24
 MP 302	0,388	25








Código	Kg/m	Flaq
 MP 309	0,384	25
 MP 321	0,381	25
 MP 332	0,474	25
 MP 336	0,422	25
 MP 352	0,199	26
 MP 354	0,734	26
 MP 357	0,500	26
 MP 358	0,481	27
 MP 359	0,389	27
 MP 360	0,377	27
 MP 361	1,004	27
 MP 362	0,982	28
 MP 363	0,488	28
 MP 370	0,646	28

#### Linha 18

 DS 028	0,120	29
 DS 031	0,198	29
 DS 038	0,272	29
 DS 039	0,479	29
 DS 042	0,142	29

#### Linha 25














 BG 031	0,102	30
 BG 035	0,108	30
 ME 056	0,168	30
 25 081	0,285	30
 25 032	0,243	30
 25 016	0,322	31
 25 026	0,478	31
 25 040	0,424	31



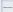



















Código	Kg/m	Flaq
 25 052	0,329	31
 25 301	0,282	31
 25 311	0,387	32
 25 312	0,314	32
 25 504	0,382	32
 25 508	0,521	32
 25 514	0,453	32

#### Venezianas

 MT 0071	0,327	34
 MT 0019	0,298	34
 RAM17-025	0,271	34
 VZ 090	0,257	34
 VZ 201	0,210	35
 BX 828	0,238	35
 BX 1130	0,275	35

#### Portão

 30 044	0,225	36
 AF 180U	0,840	36
 BX 827	0,450	36
 BX 812	1,303	36
 25 517	0,281	37
 25 518	0,375	37
 25 529	0,374	37
 25 517	0,374	37
 TB 690	0,728	38
 TB 690	0,779	38
 PC 027 6	0,595	38
 PC 027 6.3	0,617	38
 LB 005	0,549	39

Código	Kg/m	Pág.
 LB 007	0,608	38
 LB 008	0,586	40
 LB 010	0,602	40
 LB 012	0,553	40
 LB 036	0,612	40
 LB 037	0,679	41
 LB 050	0,627	41
 LB 052	0,589	42
 LB 070	0,739	42
 LB 081	0,625	42
 ALB 030	0,545	43
 E 77	0,659	43
 BX 785	0,680	43
 BX 016	0,675	44
 BX 041	0,545	44
 BX 042	0,589	44
 BX 1041	0,730	45
 TB 002	2,237	45
 TOR 2X1	0,438	46
 TOR 3X1.102	0,944	46
 TOR 402	1,289	46
 MT 0045	0,052	47

### Gradil

 MT 0006L	0,481	48
 MT 0008	0,548	48
 MT 0010	0,494	48
 CG 072	0,958	48
 MT 0048	1,237	48
 MT 0047	0,235	48

Código	Kg/m	Pág.
 MT 0046	0,705	50
 MT 0049	0,503	50
 MT 0050	0,494	50
 BX 708	0,651	51
 GR 001	1,008	51
 GR 002	0,952	51

### Box Frisado Antigo

 BX 060	0,176	52
 BX 061	0,180	52
 BX 062	0,235	52
 BX 063	0,208	52
 BX 101	0,427	52

### Box Frisado Novo








 BX 110	0,246	53
 BX 158	0,199	53
 BX 157	0,506	53
 BX 158	0,187	53
 BX 159	0,199	53

### Box Vidro Temperado









 BX 060	0,185	54
 BX 168	0,173	54
 BX 201	0,471	54
 MT 0089	0,070	54
 MT 0086	0,117	55
 MT 0087	0,110	55

### Vidro Temperado 8 mm

 AL 001	0,430	56
 AL 002	0,174	56
 AL 003	0,229	56

Código	Kg/m	Pág.
 MT 0080	0,321	56
 MT 0085	0,263	57
 MT 0089	0,070	57
 MT 0080	0,554	57
 BT 807	0,152	57
 BX 128	0,460	58
 BX 608	0,137	58









### Vidro Temperado 10 mm

 MT 0070	0,440	59
 MT 0032	0,280	59
 MT 0083	0,703	59
 MT 0084	0,285	59
 MT 0085	0,087	60
 BX 054	0,289	60
 BX 130	0,143	60
 BX 238	0,280	60

### Kit Pia







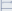
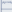
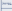

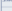





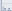










 KP 062	0,174	61
 KP 063	0,302	61
 KP 064	0,307	61

### Maxim-ar

 DS 004	0,334	62
 SU 070	0,299	62
 SU 068	0,575	62
 SU 090	0,481	62
 SU 091	0,424	63
 SU 100	0,142	63
 SU 278	0,171	63
 SU 302	0,228	63

Código	Kg/m	Pág.
 SU 778	0,378	63

### Suprema










 SU 004	0,478	64
 SU 005	1,023	64
 SU 006	0,960	64
 SU 007	0,380	65
 SU 010	1,030	65
 SU 011	0,974	65
 SU 012	0,478	66
 SU 121	1,424	66
 SU 122	1,460	67
 SU 123	0,648	67
 SU 230	0,891	68
 SU 238	0,724	68
 SU 250	0,687	68
 SU 279	0,487	68
 SU 352	1,119	69
 FU 350	0,453	69
 FU 352	0,668	69
 FU 353	0,658	70
 FU 354	0,608	70
 FU 909	0,627	70
 FU 900	0,483	71
 FU 961	0,539	71
 MT 0113	0,543	71
 MT 0117	0,760	71
 MT 0121	0,912	72
 EX 823	0,689	72
 EX 824	0,471	72

Código	Kg/m	Pág.
 EX 825	0,704	72
 EX 826	0,527	73
 EX 827	0,562	73
 EX 1097	0,587	73

### Secada

 EX 682	0,955	74
 EX 683	0,523	74
 EX 684	1,243	74
 EX 685	0,192	75
 EX 686	0,486	75
 EX 687	0,683	75

### Pede de Vidro

 EX 709	1,589	76
 EX 710	2,127	76
 EX 713	1,185	77
 EX 716	0,715	77
 EX 717A	0,692	77
 EX 1098	0,668	78
 EX 1099	0,514	78
 EX 705	0,744	78
 EX 711	0,309	78

### Perfil para Policarbonato

 EX 1090	0,519	79
 EX 1093	0,074	79
 EX 1094	0,230	79
 EX 1001	0,098	79
 EX 1002	0,105	79

### Perfil para Energia Solar

 EX 1096	0,541	80
---	-------	----

Código	Kg/m	Pág.
 EX 1097	0,573	80
 EX 1933	0,887	80

### Outros

 MT 0077	0,192	81
 U 15	0,172	81



[www.alumifont.com.br](http://www.alumifont.com.br)